

TWO NEW SPECIES OF *SCYMNUS* KUGELANN FROM HUBEI* (COLEOPTERA: COCCINELLIDAE)

Ren Shunxiang Pang Xiongfei

(Laboratory of Insect Ecology)

Abstract In the present paper, two species of *Scymnus* Kugelann from Hubei Province, China are described as new: *Scymnus (Neopullus) thecacontus*, *Scymnus (Pullus) ancontoplythus*.

Key words Coleoptera; Coccinellidae; *Scymnus* Kugelann; New Species

The present paper gives descriptions of two new species of *Scymnus* Kugelann, Collected from Shennongjia and Wudanshan, Hubei Province, China. Type specimens are deposited in South China Agricultural University, Guangzhou.

1 *Scymnus (Neopullus) thecacontus* Ren et Pang, sp. nov.

Length 1.66 mm; width 1.31 mm.

Form short oval in outline, moderately convex with dorsal pubescence yellowish white. Head yellowish brown with eyes greying brown and tip of mandible dark brown. Pronotum yellow with a dark basal spot. Scutellum black. Elytra black with apex yellow (fig. 1). Prosternum and hypomeron yellowish brown; meso- and metasternum dark brown. Abdomen yellowish brown with the anterior process of 1st sternum, central parts of 2nd and 3rd sternum dark brown. Legs yellow.

Punctuation on head fine, separated by 1.0~1.5 times a diameter; punctures on pronotum like those on head; elytral punctures coarser than those on head, separated by about a diameter. Prosternum with intercoxal carine extending to anterior margin, slightly convergent anterior, length about 2 times width at base. Postcoxal line complete, extending to about 5/6 length of 1st abdominal sternum; area surrounded by postcoxal line irregularly punctate, smooth along postcoxal line (fig. 3).

Male genitalia: Siphon moderately slender with long inner process and short outer process of siphonal capsule, and with a thread-like appendix of siphonal apex (figs. 4~5). Tegmen slightly stout with lateral lobes slightly shorter than median piece (figs. 6~7).

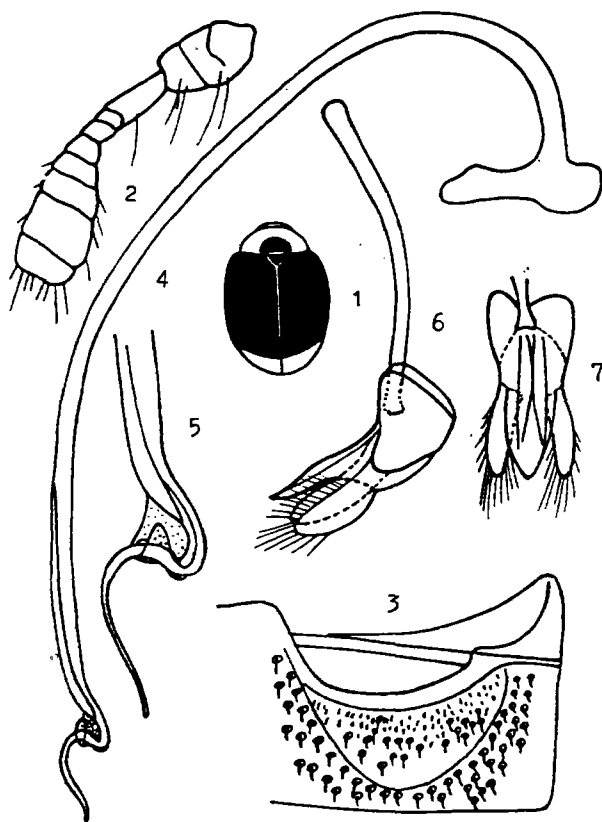
Holotype: ♂, No. 890077-1, Shennongjia, Hubei Province, China, 10-VII-1989, collected by Ren Shunxiang.

Remarks: This new species is similar to *Scymnus (Neopullus) babai* Sasaji 1971 in body colouration, and *Scymnus (Neopullus) yamato* Kamiya 1961, *Scymnus (Neopullus) hofmanni* Weise 1879 in

* The project supported by Natural Science Foundation of P. R. China

1992-12-29 收稿

siphonal spex of male genitalia, but it is easily distinguished from the latter three by the small in size, form short oval in outline, and area surrounded by postcoxal line with irregularly punctate.



Figs. 1—7 *Scymnus (Neopullus) thecacontus* Ren et Pang, sp. nov.

1. outline of body; 2. antenna; 3. fist abdominal sternum; 4. siphon; 5. apex of siphon; 6. tegmen, ventral aspect; 7. tegmen, lateral aspect.

2 *Scymnus (Pullus) ancontophyllus* Ren et Pang, sp. nov.

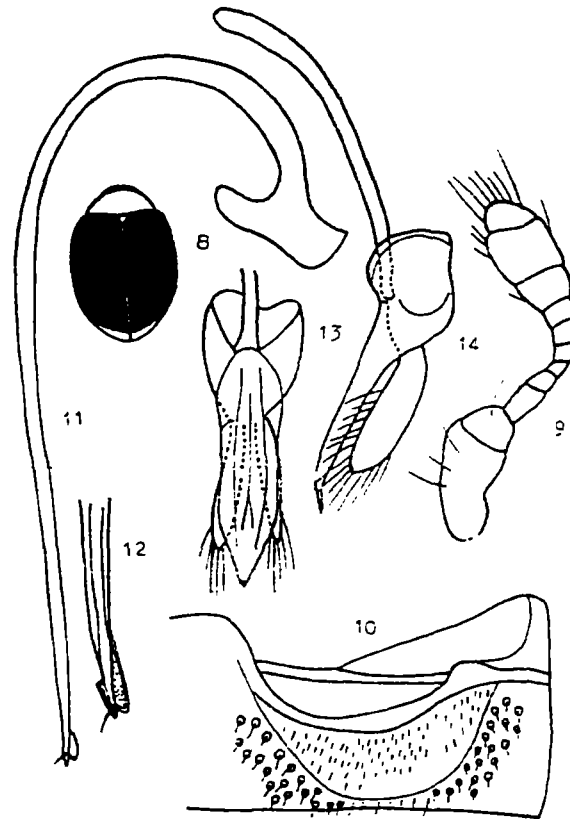
Length 1.60~1.71 mm; width 1.14~1.20 mm.

Form elongate oval in outline, moderately convex with dorsal pubescence yellowish white. Head yellowish brown with eyes black and tip of mandible dark brown. Pronotum yellow. Scutellum dark brown. Elytra black with apex yellow (fig. 8). Prosternum and hypomeron yellowish brown; meso- and metasternum dark brown. Abdomen yellowish brown with the anterior process of 1st sternum, central parts of 2nd and 3rd sternum dark brown. Legs yellow.

Punctuation on head fine, separated by 1.5—2.0 times a diameter; punctures on pronotum like those on head; elytral punctures coarser than those on head, separated by 1.0—1.5 times a diameter. Prosternum with intercoxal carine extending to anterior margin, slightly convergent anterior,

length about 1.5 times width at base. Postcoxal line complete, almost extending to hind margin of 1st abdominal sternum; area surrounded by postcoxal line finely punctate, smooth along postcoxal line (fig. 10).

Male genitalia; Siphon slightly slender with inner process and outer process of siphonal capsule almost equal in length, and with a thread-like appendix of siphonal apex (figs. 11~12). Tegmen moderately stout with median piece longer than lateral lobes; median piece arrow-shaped in ventral aspect and apex of median piece curved upward in lateral aspect (figs 13~14).



Figs. 8—14 *Scymnus (Pullus) ancontophyllus* Ren et pang, sp. nov.

8. outline of body; 9. antenna; 10. first abdominal sternum; 11. siphon; 12. apex of siphon; 13. tegmen, ventral aspect; 14. tegmen, lateral aspect.

Holotype: ♂, No. 890076—1, Shennongjia, Hubei Province, China, 15—VII—1989, collected by Ren Shunxiang.

Paratypes: ♂, same data as holotype; 1 ♀, Wudangshan, Hubei Province, China, 18—VII—1989, collected by Ren Shunxiang.

Remarks: This new species is similar to *Scymnus (Pullus) miyatakei* Kamiya 1961, but it is easily distinguished from the latter by postcoxal line almost extending to hind margin of 1st abdominal sternum, siphonal apex with a short thread-like appendix and median piece of tegmen distinctly

curved upward at apex in lateral aspect.

REFERENCES

- 1 Kamiya H. A revision of the tribe Scymnini from Japan and the Loochoos (Coleoptera: Coccinellidae). Part I. Fac Agric Kyushu Univ 1961, 302~332
- 2 Sasaji H. Fauna Japonica: Coccinellidae (Insecta: Coleoptera) Academic Press of Japan, Tokyo 1971, 340

湖北小毛瓢虫属二新种记述

(鞘翅目：瓢虫科)

任顺祥 庞雄飞

(昆虫生态研究室)

摘要 本文记述了采自湖北省神农架和武当山的小毛瓢虫属 *Scymnus* Kugelann 二新种：套矛毛瓢虫 *Scymnus (Neopullus) theacontus* Ren et Pang, sp. nov. 和箭叶小瓢虫 *Scymnus (Pullus) ancontophyllus* Ren et Pang, sp. nov. 模式标本保存于华南农业大学昆虫标本室。

关键词 鞘翅目；瓢虫科；小毛瓢虫属；新种